

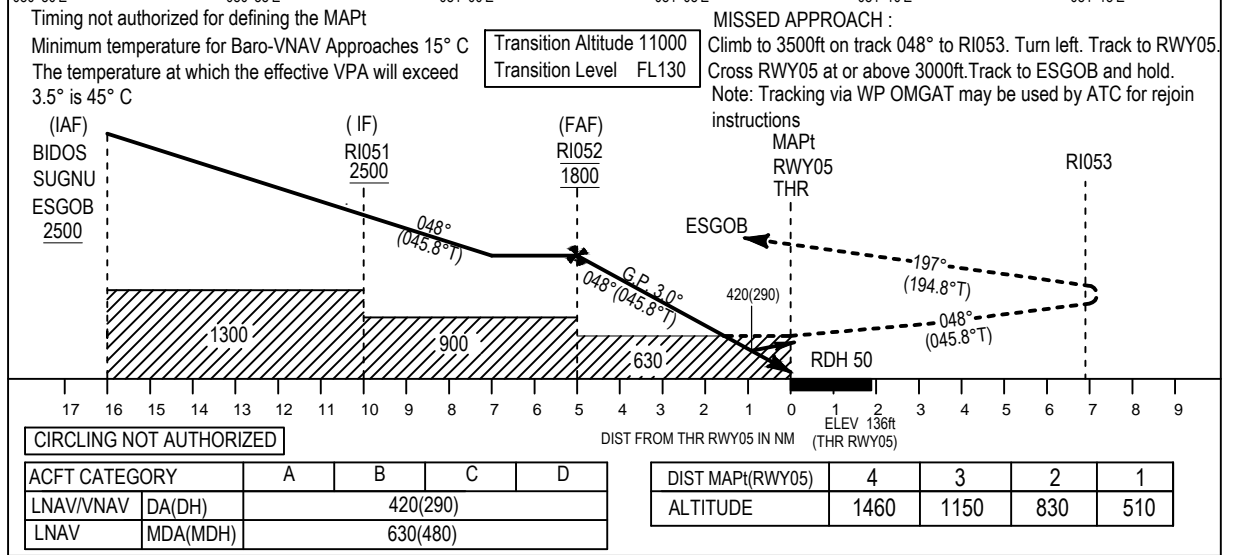
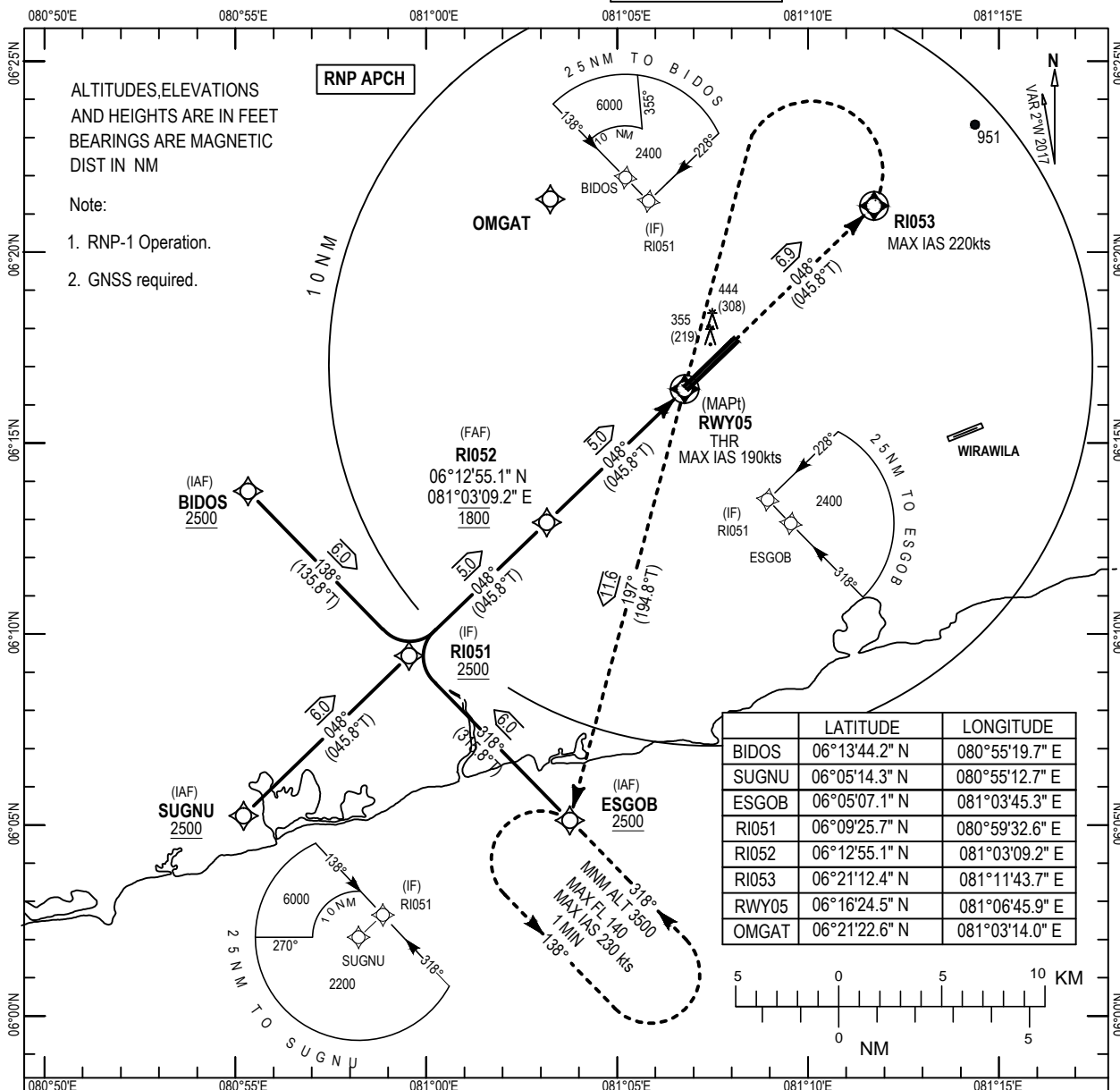
**INSTRUMENT APPROACH
CHART - ICAO**

AD ELEV 159ft
HEIGHTS RELATED TO
THR RWY05 ELEVATION 136ft

Colombo 132.4 120.9
Director
Mattala 119.85 124.35
Tower
SMC 121.7

MATTALA/ Mattala Rajapaksa Intl.(VCRI)

RNP RWY05



CODING TABLE FOR RNP APCH RWY 05

Segment	FIX	Path Term.	WP	FO	Course/Track ° Mag (°T)	Mag Var.	Distance (NM)	Turn Direction	Altitude (ft)	Max Speed (IAS/kt)	VPA / RDH	NAV Specs
Transition	IAF	IF	ESGOB	-	318 (315.8)	+2.0	6.0	-	+2500	-	-	RNP APCH
	IAF	IF	BIDOS	-	138 (135.8)	+2.0	6.0	-	+2500	-	-	RNP APCH
	IAF	IF	SUGNU	-	048 (045.8)	+2.0	6.0	-	+2500	-	-	RNP APCH
	IF	TF	RI051	-	-	+2.0	-	-	+2500	-	-	RNP APCH

Segment	FIX	Path Term.	WP	FO	Course/Track ° Mag (°T)	Mag Var.	Distance (NM)	Turn Direction	Altitude (ft)	Max Speed (IAS/kt)	VPA/ RDH	NAV Specs
Approach	IF	TF	RI051	-	048 (045.8)	+2.0	5.0	-	+2500	-	-	RNP APCH
	FAF	TF	RI052	-	048 (045.8)	+2.0	5.0	-	@1800	-	-3.0/50	RNP APCH
	MAPT	TF	RWY05	Y	048 (045.8)	+2.0	6.9	-	+630	190	-	RNP APCH
	MATP	CF	RI053	Y	-	+2.0	-	-	-	220	-	RNP APCH
	WP	TF	RWY05	Y	197 (194.8)	+2.0	11.6	-	+3000	-	-	RNP APCH
	MAHF	TF	ESGOB	-	-	+2.0	-	-	+3500	230	-	RNP APCH

Note : Tracking via waypoint OMGAT to rejoin IAF may be used by ATC for aircraft, as an alternate to Missed Approach Procedure.

Path Descriptor	Fix Identifier (WP)	Inbound Course M°(T°)	Leg Distance (NM or min.)	Turn Direction (L/R)	Minimum Altitude (ft)	Maximum Altitude (ft)	IAS (kt)	Magnetic Variation +/- (°)	NAV. Spec.
Hold	ESGOB	318	1 min.	L	3500	14000	230	+2	RNP